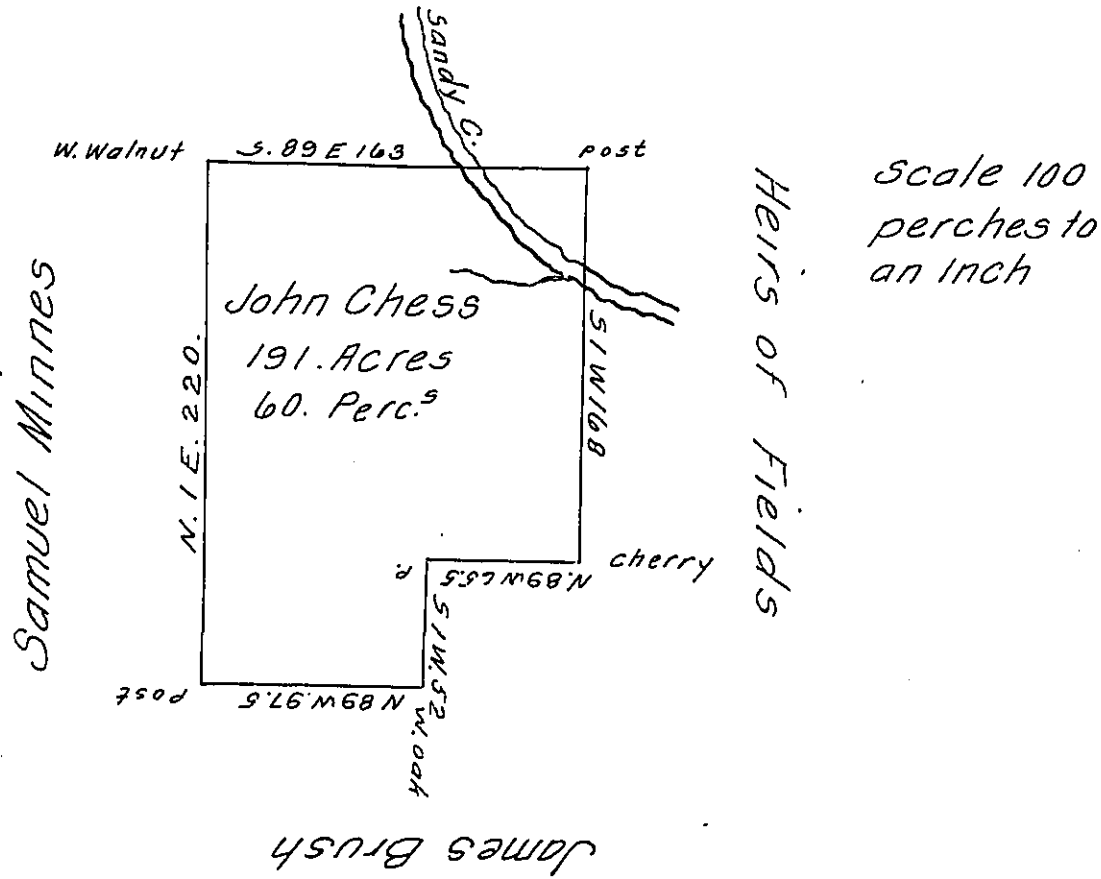


William Williams



Scale 100 perches to an inch

Situate in Sandy Creek Township Mercer County. containing 191 acres and Sixty perches and allowance. Surveyed the 21st of February 1837 In persuance of an Actual Settlement made in 1798 John Chess now in possession and a large improvement, March 9th 1837.

B. Alexander D. S.

John Taylor Esq^r S.G.

IN TESTIMONY that the above is a copy of the original remaining on file in the Department of Internal Affairs of Pennsylvania, made conformably to an Act of Assembly approved the 16th day of February, 1833, I have hereunto set my Hand and caused the Seal of said Department to be affixed at Harrisburg, this twelfth day of October 1908.

Henry Hoover
 Secretary of Internal Affairs.